



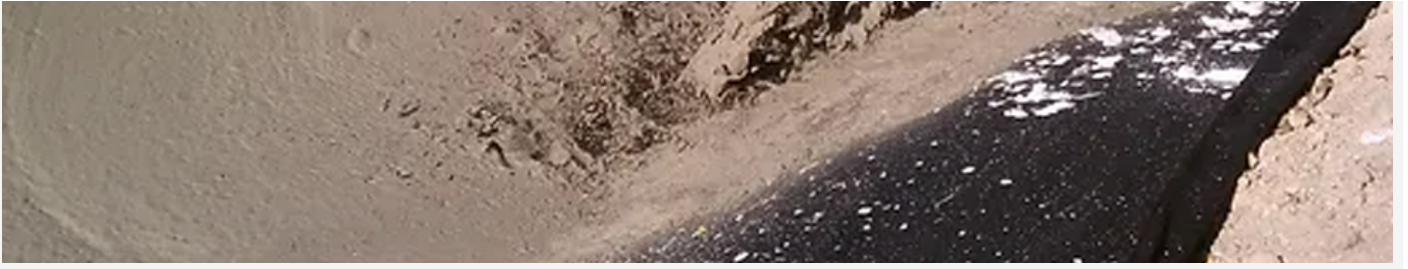
Flowable Fill

SERVICE OVERVIEW

Flowable fill

Flowable fill, also known as controlled low-strength material (CLSM) or flowable mortar, is a self-leveling, self-compacting, and highly flowable material used in various construction applications. Unlike conventional concrete, flowable fill is not designed to achieve high compressive strength. Instead, its primary characteristics include ease of placement and flowability.







About Us

At Speedy Concrete, we take pride in our journey of delivering quality concrete solutions in Western Canada. Over the years, we have grown from a local concrete supplier to a trusted partner for construction projects of all sizes.

Useful Links

- > Home
- > About Us
- > Services
- > Contact Us

Get in Touch

📍 11615 Eburne Way, Richmond BC

✉ info@speedyconcrete.ca

☎ +1-6043733326

📠 +1-6043733326

Google Map

